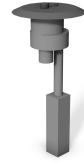




Wiremold

REVIT CONTENT GUIDE

Manufacturer: Legrand | Wiremold
File: Poke_Thru-Assembled_Unit-Wiremold-4FF_Series.rfa
Type Catalog: Not Applicable
Rendering file: Not Applicable
Schedule file: Schedule - Poke_Thru-Assembled_Unit-Wiremold-4FF_Series.rvt



Instance Properties

Identity Data	
Equipment Number	
Part Description	Flush Furniture Feed Poke-Thru Assembly-Gray
Part Number	4FFATCGY

Type Properties

The family contains the following 4 types:
Black (Values for this type are shown below)
Aluminum
Brass
Gray

Constraints	
Default Elevation	48.000
Construction	
Installation Floor Type	Tile, Carpet, Wood
Installation Location	Above Grade Concrete
Electrical	
Apparent Load	0.00 VA
Load Classification	Other
Power Factor	1.000000
Voltage	0.00 V
Fire Protection	
Fire Classification	Up to Two Hours
Geometry	
Diameter	7.500
Height	16.938

Identity Data	
Copyright	Copyright © Legrand Wiremold
Date Last Modified	October 22, 2012
Description	Flush Furniture Feed Poke-Thru Assembly-Gray
Equipment Abbreviation	PT
Family Version	1.0.0
Manufacturer	Legrand Wiremold
Model	4FFATCGY
Model Disclaimer	Contact Legrand Wiremold for more information
Original Creation Date	October 22, 2012
Product Documentation Link	http://www.legrand.us/~ /media/A2C112279D004B0E87C56125FDC38B29.ashx
Product Page URL	http://www.legrand.us/wiremold/poke-thru-devices/furniture-feed-poke-thru-devices/4ffatc-multi-service-poke-thru-device/4ffatc-furniture-feed-poke-thru-assembly.aspx#.UMfOtHfW71U
Provide Feedback	https://www.surveymonkey.com/s/BDXT5XT
Standard Equipment	One 3/4" size conduit and one 1 1/4" trade size conduit. Finish cover provided with one 3/4" trade size screw plug opening and one 1 1/4" trade size screw plug opening.
URL	http://www.legrand.us/wiremold.aspx
Materials	
Product Material	Cast Iron - Wiremold

Half-tone text in the property tables indicates that the value is locked from editing.

Loading and Placing into the Project:

One "Electrical Fixtures" family is supplied and can be loaded into a Revit project through all traditional methods. The Poke Thru device requires a work-plane host to be placed within the project (i.e. floor). Also, ensure that the visibility settings within the project are modified to have the Electrical Fixtures category visible.

Project Behavior:

Within the type and instance properties dialogues, the user will find useful information for scheduling purposes such as Height, Diameter, Installation Floor Type and other unique properties of the model. In "Identity Data" the user will find information specific to Legrand | Wiremold and the model, i.e.: family revision information, Legrand | Wiremold copyright information, part description, product URL and other specific data. *See scheduling description below.

Conduit may be drawn from any of the many connection points in the model.

Empty electrical parameters exist for entering in electrical requirements. These parameters are mapped to the connection points.

Instance Parameters:

In the "Instance Parameters", the user has no options to modify.

Type Parameters:

Each type represents a manufactured product. Therefore, the type parameters should not be modified by the user. Please note:

- Product Documentation Link – Directs a webpage to the products online listing.
- Equipment Abbreviation – For filtering schedules. *See scheduling description below.
- Installation Location – Indicates grade level for installation.
- Installation Floor Type – Depicts which floor finish the Floor Box is suitable for.

Visibility:

For best performance, all model geometry is turned off in Plan View and represented through masking regions and symbolic/model lines that update automatically when a user changes types.

Rendering:

When the family file is loaded into the project, standard Legrand | Wiremold materials are imported. These may be modified, though ensure that the modification selection matches an actual manufacturer supplied option.

Schedule Creation:

Legrand | Wiremold products may be scheduled utilizing the schedule view in the given project file. Select and copy (Ctrl-C) the schedule from the sheet view and paste it (Ctrl-V) into a sheet in your project. The schedule filters are set to look for only those units designated with Manufacturer as "Legrand | Wiremold" and Equipment Abbreviation as "PT". The schedules contain special functionality for displaying the configured order numbers of the different selected types.